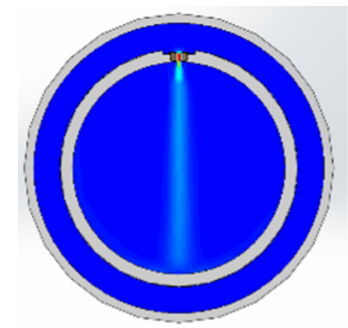
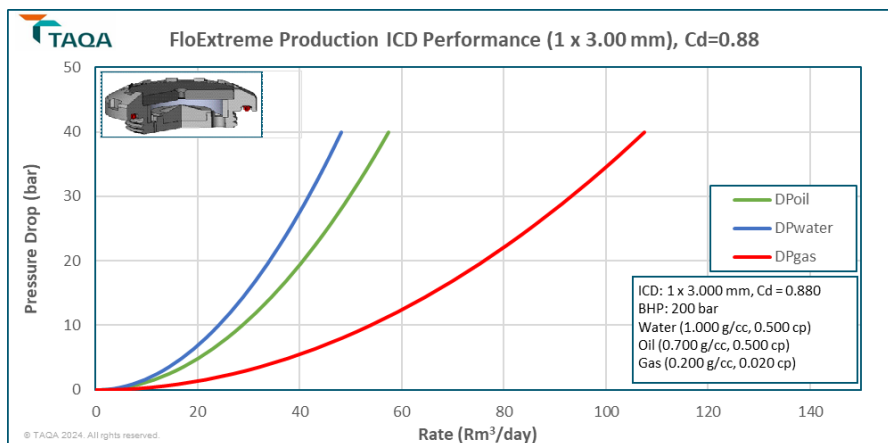


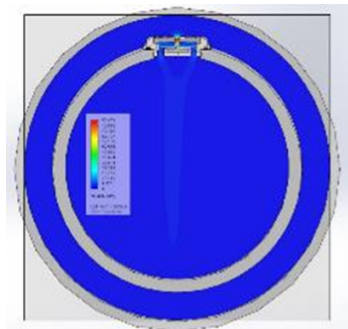
In production wells, uneven flow along the wellbore, due to the heterogeneity of reservoir properties and/or the impacts of wellbores, would result in early breakthrough of water or gas, reducing recovery, revenue and well life.

FloExtreme ICD offer all functions of conventional ICDs while extending ICD applications to extreme operating conditions. With customizable nozzles and high-pressure differential capability (up to 1500 psi), the device enables optimum zonal control where other devices fail to function.

Its unique design dissipates flow energy internally, reduces the exits jetting turbulence therefore eliminates risk of erosion to the base pipe. This is especially beneficial to the wells at high CO₂ (sweet), H₂S (sour) and high temperature environments, helping to minimize corrosion-erosion.



Without FloExtreme



With FloExtreme

CFD modelling illustrating jetting flux without FloExtreme dissipated with the FloExtreme

FEATURES AND BENEFITS

- **WITHSTANDS** high rates and high pressure drops
- **DENSITY DEPENDANT** functionality behaviour
- **APPLICABLE** for both carbonate and sandstone reservoirs - Shut-off option - SSD
- **REDUCES** erosion/corrosion of the base pipe
- **COMPATIBLE** with TAQA's plug and play portfolio

