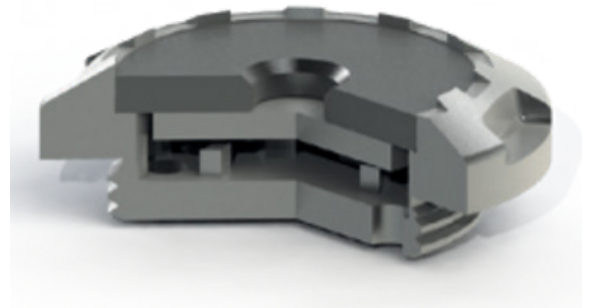
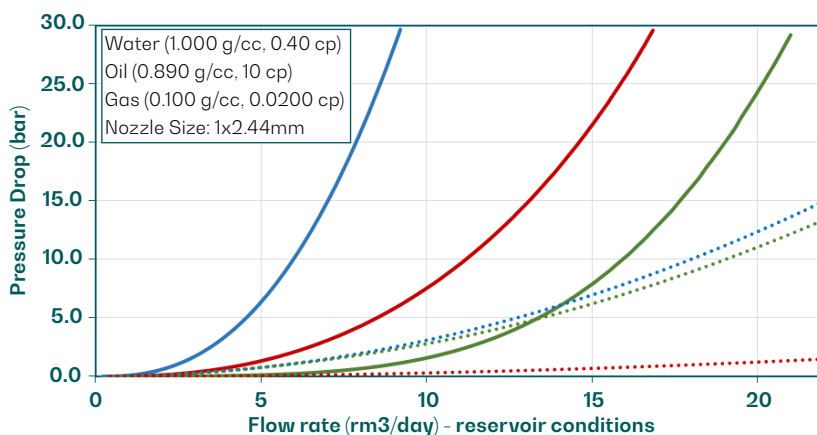


The award-winning FloSure Autonomous Inflow Control Device (AICD) is an effective solution for increasing oil production over the life of the field. Over 100,000 FloSure AICD have been successfully deployed in more than 1000 light and heavy oil wells to overcome excessive water and gas production. The design includes a levitating disc that regulates the flow of fluids by automatically modifying its control characteristics in response to the fluid properties - fluid viscosity and density. The device preferentially chokes unwanted fluid producing zones whilst promoting oil production from the rest of the well.

FloSure AICD Performance Vs Passive ICD



AICD	WATER	OIL	GAS
PASSIVE ICD	WATER	OIL	GAS

FEATURES AND BENEFITS

- **AUTONOMOUS DOWNHOLE CONTROL** no need for intervention or surface control
- **OUTPERFORMS** passive ICDs for Gas/Water control
- **CHECK FUNCTIONALITY** allows for wash pipe free fluid circulation and powering motors
- **RESPONSIVE** valve will respond to velocity of the fluid coming into the well
- **COMPATIBLE** with TAQA's plug and play portfolio