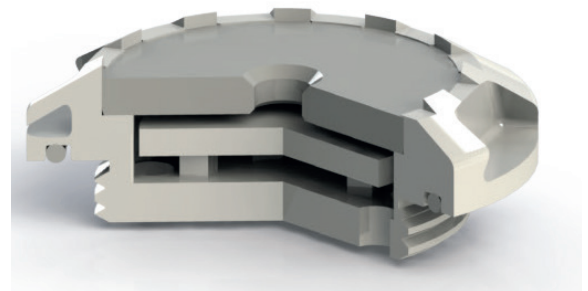
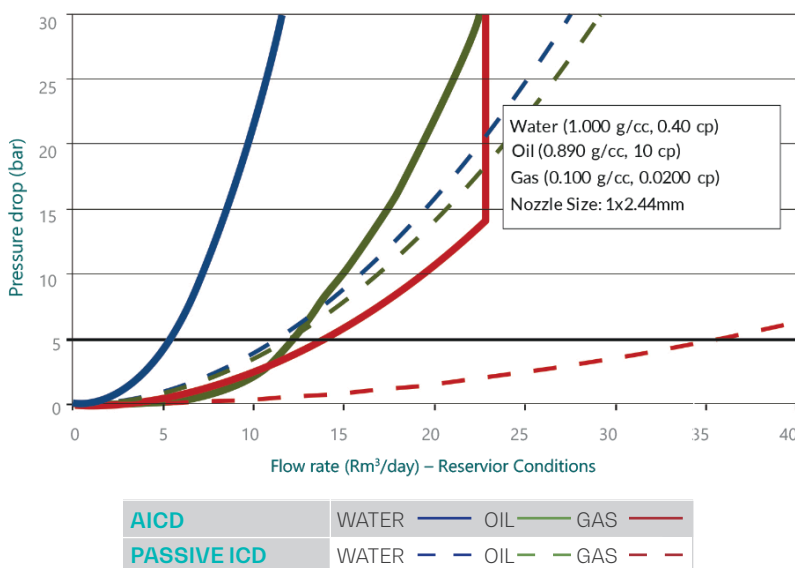


The FloSure Autonomous Inflow Control Device (AICD) is an effective solution for increasing oil production over the life of the field. The award-winning FloSure AICD has been deployed successfully in light and heavy oil wells to overcome water or gas breakthrough and ensure uniform production longevity. The device preferentially chokes unwanted produced fluids whilst promoting production of oil from the entire length of the well. The design includes a levitating disc that responds to fluid viscosity and density.

FloSure AICD Performance V Passive ICD



## FEATURES AND BENEFITS

- **VARIABLE** choke which controls both gas and water in wells
- **OUTPERFORMS** passive ICDs through Gas/Water control
- **LEVITATION DISK** allows for ream or wash-down and spotting of beaker fluids
- **RESPONSIVE** - valve will respond to velocity of the fluid coming into the well
- **READILY CONFIGURABLE** for a range of production conditions
- **NO OD PROTRUSION** when incorporated into a screen joint